

WRCC

News
February
2010

Publication of the Wichita Radio Control Club

AMA Club 316
IMAA Chapter 371

2010 Club Officers

President:

Terry Grimes

Vice-President:

Marvin Blankenship

Treasurer:

Terry Powell

Secretary/Newsletter:

Dawn Morse

Safety Coordinator:

Gene Morse

Webmaster:

Richard Bereman

Club Address:

WRCC
c/o Kansas Aviation Museum
3350 George Washington Blvd
Wichita, KS 67210

Inside this issue:

Notes from the President	1
WRCC Auction	2
March Meeting Notice	2
Vice President Corner	3
Next WRCC Meeting	3
Safety Matters	3
Membership Renewals	3
Newsletter Submissions	3
Beech Field Permit	4
Jan Meeting Notes	5-6
AMA Safety 2010 Code	7-8

Notes from the President

By Terry Grimes


Hi members! This year our club has many events to attend and to help with, and don't forget to visit the club's web site for more detailed information. Richard our webmaster does a great job of keeping our web site up-to-date and I try and keep the events calendar current: remember we cant help promote your events if we do not know what, when, and where.

For some of you without access to the web, we will try and keep you informed in this newsletter each month and we are talking about how to make the newsletters available to you to pick up.

Here is a list of what's happening this year:

- WRCC annual auction February 20 at the 4-H bldg
- 1st annual Spring Fling Fun Fly April 10 at Chapin Park
- Past Presidents fun-fly may 15 Chapin Park
- Annual Planes Over El Dorado June 25-27 El Dorado airport
- 2nd annual IMAC event August 20-22 Chapin Park
- WRCC Jumbo event October 1-3 lake Afton Park
- WRCC Christmas party
December 5 - location TBA

Remember to visit the WRCC web site for more information on the above events.



Don't Forget!!
The February Meeting is on
Friday 2/19, 7:00 at the
4-H Building!

Auction!

FRIDAY 2/19

* Primary move in from 2PM until 8PM

SATURDAY 2/20

* Limited move in from 6AM until 7AM

* Auction begins at 8AM

Contact Fred Harvey for information and to find out where help is needed.

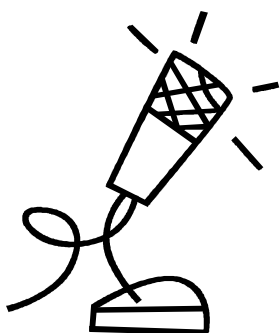
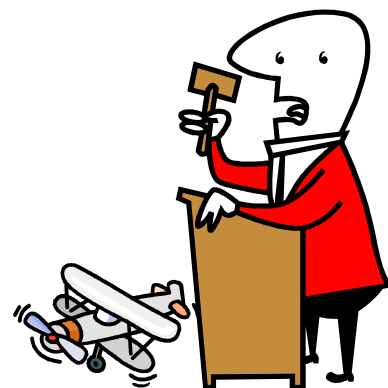
Contact Fred Harvey at 316.788.4493 or fwharvey@swglobal.net See the event flyer [here](#).

*** Auction Meeting ***

Come help with last-minute details!

- ◆ When: Tuesday, February 16th @ 7:00pm
- ◆ Where: Spear's West

Call Fred for details, 316.788.4493



Testing...testing...is this thing on??

Do you have, or have access to microphones the club can use for this year's auction? If so, please call Fred! 316.788.4493

NOTICE: The March meeting has been rescheduled due to a special event at the Wichita Aviation Museum. The rescheduled date is: **Wednesday, March 24th at 7:00**



WE (still) WANT YOU!

TO HELP WITH THE AUCTION!

Call Fred Today!

316.788.4493

or fwharvey@swglobal.net



Newsletter

Submit your stories and pictures to the WRCC News!

Deadline is the 2nd Friday of each month.

E-mail to newsletter@wichitaradiocontrolclub.org.

Please include your contact information.

Vice President's Corner By Marvin Blankenship

Well if you braved the snow to attend the January meeting, thanks for being there. I brought in a "show and tell" article. This was a purchase I made at the 2009 WRCC auction. I picked up this little treasure to add to my air force for a mere \$55 bucks, (probably because it looked all used up). This is a C-160 Transall twin engine 25 size



with a 72" wing span, that looked like it hadn't been flown for years. The fuselage was fiberglass and had spider-web-like cracks all over it. With a little CA and Rustoleum paint, I restored it. The tail feathers had to be replaced, however. This required salvaging the existing parts to use as a pattern for the replacements. I searched the internet for a instruction sheet for throw deflections and a starting point for the CG. Total restoration time was less than a week, and I had the remaining components from a previous model known as the Twin Star. I've logged approximately 10 flights, and have decided it's a keeper! -Marvin

February Meeting

The February meeting will be on the 19th at the 4-H building at 7:00. Here are some topics and updates we will discuss:

- Last-minute Auction Details
 - Field updates
 - 2010 Calendar
 - Raffle!
- See you there!

Annual Renewals

Don't forget to renew your AMA membership for 2010. A current AMA membership is required for WRCC flying members, and at many flying fields. You can renew online by clicking [here](#).

Your WRCC membership must be renewed annually as well. Get the new 2010 membership application [here](#).

A new application is needed annually.

Consider becoming a member of the Wichita Aviation Museum! See information about membership benefits by clicking [here](#).



Safety Matters:



Remember This?

Submitted by Gene Morse

"I agree to comply with the AMA Safety Code for all applicable model operations. I understand that my failure to comply with the Safety Code may endanger my liability coverage for any damages or claims so caused. I further understand that written notice of the occurrence of any incident must be immediately provided."

"I am aware that modeling may present hazards to participants and spectators. I exempt, waive, and relieve the Academy of Model Aeronautics, Incorporated (AMA) from all current or future liability for personal injury, property damage, or wrongful death caused by negligence."

Signature of Applicant _____

Parent or Guardian of Applicant under age 18 must also sign _____

It's the portion of the AMA Membership Application that all AMA Members are required to sign every year to renew their AMA Membership. It states that the individual agrees to comply with the AMA Safety Code for all applicable model operations...and then on the next page of the application the AMA lists the "National Model Aircraft Safety Code."

Every year we agree to operate by the Safety Code...but do we take time to read and understand it? You can find a copy of it here (<http://www.modelaircraft.org/files/902.pdf>) or at the end of this newsletter.

Take a few minutes to read and understand the Safety Code every year. It's the responsible thing to do.

If you plan to fly at the Hawker-Beechcraft Flying Field, please fill out and mail the application below to the address at the bottom of the form. Be sure to include \$1 per person to cover the cost of printing the cards.

Radio Control Field Rules

Altitude Limit is 350 feet.

1. Model operations must be in accordance with official A.M.A. Safety Code.
2. Each flyer must place their clothespin on the appropriate frequency to be used and leave the pin up as long as the TX is in use.
3. A 10 minute time limit is mandatory when there is more than one flyer on the same frequency.
4. Transmitters must be impounded when not in use.
5. All preflight operations must originate from the pit area.
6. All engine starts must be done in front of the pit area.
7. All take offs & landings must be done from the runway so that the flyer is always between the airplane & pit area. Safety of the spectators and those in the pit area receives priority.
8. Immediately after takeoff the flyer and helper must return to a Flight Line 25 ft. from the runway. Only the flyer and helper will be allowed on or beyond this line.
9. Flying is permitted in any area bordered by the following.
 - a. South of 13th Street
 - b. East of the Runway
 - c. North of the Gun Club.
 - d. West of the hedgerow.
10. As a safety precaution parents are asked to please control the activities of their children.

(Please Print)

Name _____ Phone Number _____

Address _____ AMA # _____

City _____ State _____ Zip _____ *E-mail Address _____

Sign _____ Date _____

Please mail completed form to:

Martha Tregellas
5620 S. Mead
Wichita, KS 67216
For questions—316-393-5229

*Optional

Terry Grimes called the meeting to order.

Minutes of the November and December meetings were presented - approved

Visitors: none

Reports:

Treasurer – Terry Powell gave report.

Calendar – added CTRCC Jumbo. Asked for racing schedule, should be provided by Vic Kirkpatrick. CTRCC swap meet is on Saturday at 9:30, but is not on calendar.

Safety – no report

Newsletter – need articles.

Website – has all officers updated and email accounts updated.

Chapin – Terry G. updated that new porta-potties are installed from city.

Beech – Jerry reported no new activity. Loren reported they can start printing Beech cards next week. Application is on the website.

Afton – Vic asked about mower. Gene Morse updated the group on the mower maintenance performed. Mowers should be returned Monday. This was per a previous club vote.

All Fields – all field sheds now have chemical fire extinguishers, first aid kits will be reviewed soon. Wind socks will be replaced in spring. Combination has been distributed to active members, and will be changed March first and distributed to all renewed members.

Fall Jumbo Fly – no report

Auction – Fred Harvey reports postcards have been sent to those without email addresses. All club contacts in region have been sent flyers for distribution and posting. We only have about 24 sellers registered, which is about half of last year at this point. Still hearing from sellers, so we hope to have a much bigger turnout. Reminded that sellers can add items even after registration is turned in. The 4-H building fees will be raised for next year. Fred still needs help with administration of the business area – needs someone who can work well with the public. Also needs someone to run the impound areas. Raffle item will be picked up soon. Please call Fred and let him know what you can do. Still looking for some PA equipment. Vic recommended we buy a couple for the club to have. Vic will work with Fred on that.

Setup is on Friday – see website for information – we need help setting up at noon, then sellers in no earlier than 2:00.

New Business:

Glenn Harper would like to help with a Fly-In at the El Dorado airport the last weekend in June – June 26, 27. No funds needed. Had a motion and second. IMAA is not required. AMA is required, 80-inch. More details to come. Motion carried unanimously.

Glenn Harper asked if we will be able to have an IMAC event at Chapin. Terry replied that we are still working on details with the city, and recommended Glenn bring it back up at the March meeting. Vic asked if we can fix up the helicopter area at Chapin. Terry agreed and said we need to do some moving of bleachers, poles, etc. and will work on the heli-pads. Terry proposed we move the February meeting to Friday the 19th, the day before the auction, in conjunction with setting up. Meeting would be at 7:00. Motioned and carried unanimously.

Open discussion:
none

The group took a break.

Show and Tell:
Larry Tener showed his new 3-D indoor flyer Ultra Micro 4-Site made by EFlight. Weighs 1.1 oz. Comes completely assembled. Says they are about \$169. Includes a nice recharging station. Marvin Blankenship showed his twin-engine auction purchase from last year. It's a 25-size C-160 Transall. He put a lot of work in it, and it looks just great!

Attendance Drawing:
Rob Evans was drawn but not in attendance. Next drawing will be \$20.

Raffle:

Terry Grimes (2)	Gene Morse (2)	Richard Bereman
Dennis DeMoure	Stephen Albers	Lynn Just

New Business:
Terry Grimes nominated Gene Morse as Safety Coordinator. Club confirmed unanimously.

Meeting adjourned

NOTICE: The March meeting has been rescheduled due to a special event at the Wichita Aviation Museum. The rescheduled date is: **Wednesday, March 24th at 7:00**

**Academy of Model Aeronautics
National Model Aircraft Safety Code
Effective January 1, 2010**

GENERAL

A model aircraft shall be defined as a non-human-carrying aircraft capable of sustained flight in the atmosphere. It may not exceed limitations

established in this code and is intended to be used exclusively for sport, recreation, and/or competition.

1. I will not willfully fly my model aircraft in a careless or reckless manner, and will abide by this Safety Code and any additional rules specific to flying sites.
2. I will yield the right-of-way to man-carrying aircraft and will see and avoid all aircraft, utilizing a spotter when appropriate. (See AMA Document #540-D on See and Avoid Guidance.)
3. I will not fly my model aircraft higher than approximately 400 feet above ground level, when within three (3) miles of an airport without notifying the airport operator.
4. The maximum takeoff weight of a model aircraft, including fuel, is 55 pounds, except for those flown under the AMA Experimental Aircraft Rules.
5. I will not fly my model aircraft in sanctioned events, air shows, or model demonstrations unless I have previously proven that my aircraft, control system, and piloting skills are adequate by successfully executing all maneuvers intended or anticipated in the specific event. If I am not a proficient pilot, I will not fly in these events unless assisted by an experienced pilot.
6. I will not fly my model aircraft unless it is identified with my name and address, or AMA number, inside or affixed to the outside of the model aircraft. This does not apply to model aircraft flown indoors.
7. I will not operate model aircraft with metal-blade propellers.
8. I will not operate model aircraft carrying pyrotechnic devices which explode or burn, or any device, which propels a projectile of any kind. Exceptions include Free Flight fuses or devices that burn producing smoke and are securely attached to the model aircraft during flight. Rocket motors up to a G-series size may be used, provided they remain firmly attached to the model aircraft during flight. Model rockets may be flown in accordance with the National Model Rocketry Safety Code; however, they may not be launched from model aircraft. Officially designated AMA Air Show Teams (AST) are authorized to use devices and practices as defined within the Team AMA Program Document.
9. I will not operate my model aircraft while under the influence of alcohol or while using any drug which could adversely affect my ability to safely control the model.
10. When and where required by rule, helmets must be properly worn and fastened. They must be OSHA, DOT, ANSI, SNELL or NOCSAE approved or comply with comparable standards.

RADIO CONTROL

1. All pilots shall avoid flying models over unprotected people.
2. I will complete a successful radio equipment ground-range check in accordance with the manufacturer's recommendations before the first flight of a new or repaired aircraft.
3. At all flying sites a safety line or lines must be established, in front of which all flying takes place. Only personnel associated with flying the model aircraft are allowed at or in front of the safety line. In the case of air shows or demonstrations a straight safety line must be established. An area away from the safety line must be maintained for spectators. Intentional flying behind the safety line is prohibited. (See AMA Document #706 for Recommended Field Layout.)
4. I will operate my model aircraft using only radio-control frequencies currently allowed by the Federal Communications Commission (FCC). Only individuals properly licensed by the FCC are authorized to operate equipment on Amateur Band frequencies.
5. I will not knowingly operate my model aircraft within three (3) miles of any preexisting flying site without a frequency-management agreement. (See AMA Document #922 for Testing for RF Interference. See AMA Document #923 for Frequency Management Agreement.)

6. With the exception of events flown under official AMA Competition Regulations rules, excluding takeoff and landing, no powered model may be flown

outdoors closer than 25 feet to any individual, except for the pilot and the pilot's helper(s) located at the flight line.

7. Under no circumstances may a pilot or other person touch a model aircraft in flight while it is still under power, except to divert it from striking an individual.

This does not apply to model aircraft flown indoors.

8. Radio-controlled night flying requires a lighting system that provides the pilot with a clear view of the model's attitude and orientation at all times.

9. The operator of a radio-controlled model aircraft shall control it during the entire flight, maintaining visual contact without enhancement other than by

corrective lenses that are prescribed for the pilot. First-Person View (FPV) flying may only be conducted in accordance with the procedures outlined in

AMA Document #550.

FREE FLIGHT

1. I will not launch my model aircraft unless I am at least 100 feet downwind of spectators and automobile parking.

2. I will not fly my model aircraft unless the launch area is clear of all individuals except my mechanic, officials, and other fliers.

3. I will use an effective device to extinguish any fuse on the model aircraft after the fuse has completed its function.

CONTROL LINE

1. I will subject my complete control system (including the safety thong where applicable) to an inspection and pull test prior to flying. The pull test will be in

accordance with the current Competition Regulations for the applicable model aircraft category. Model aircraft not fitting a specific category shall use those

pull-test requirements as indicated for Control Line Precision Aerobatics.

2. I will ensure that my flying area is clear of all utility wires or poles and I will not fly a model aircraft closer than 50 feet to any above-ground electric utility

lines.

3. I will ensure that my flying area is clear of all nonessential participants and spectators before permitting my engine to be started.

Specialized AMA Documents:

Radio Control Combat (#525)

General Radio Control Racing (#530)

Giant Scale Radio Control Racing (#515-A)

Gas Turbine Operation (note: Special Waiver Required) (#510-A)

Park Flyer Safe Operating Recommendations (#545)

First Person View (FPV) Operations (#550)

Recommended Field Layout (#706)

Procedure for RF Interference Testing between Model Sites (#922)

Frequency Management Agreements (#923)

See and Avoid Guidance (#540-D)

Team AMA Air Show Safety Document (#718)

These special codes and appropriate documents may be obtained either from the AMA Web site at

www.modelaircraft.org or by contacting AMA

Headquarters.